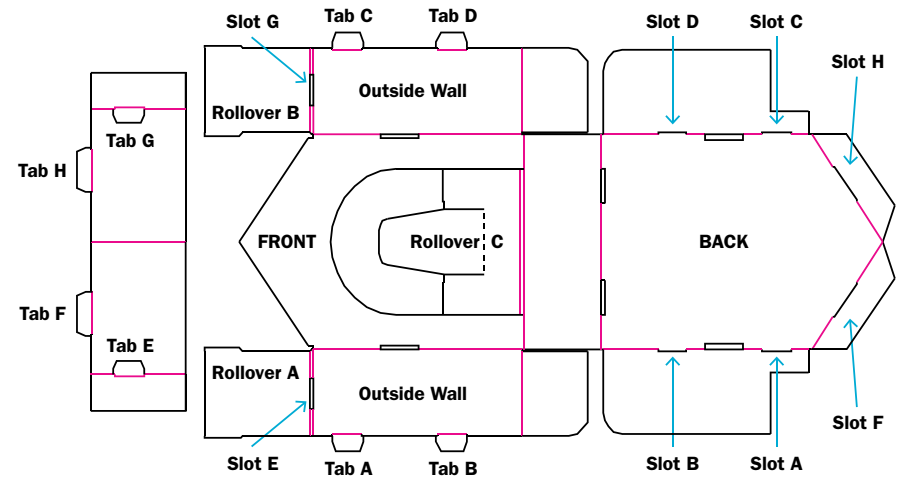




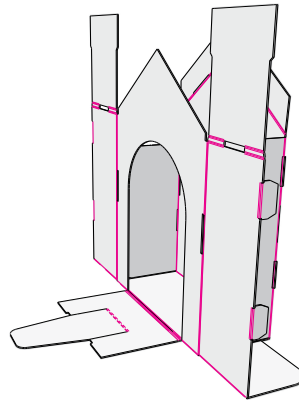
BUDDY DOGHOUSE ASSEMBLY INSTRUCTIONS


Follow the directions below to create Buddy's doghouse. For additional doghouse assembly instructions and educational ideas for Buddy puppet use in your classroom, please visit SaferSmarterKids.org/BuddyPuppet.

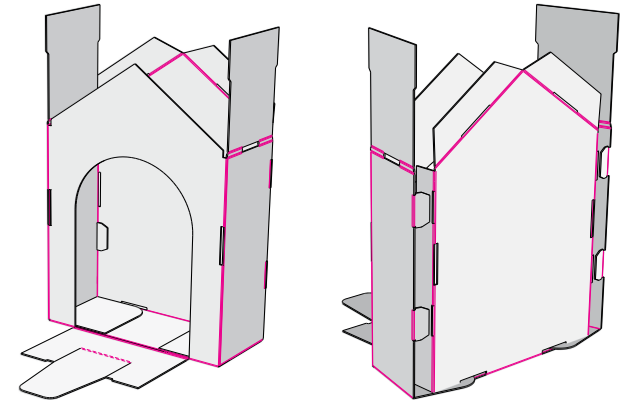



 **Step 1:** With the printed side facing down, begin by pre-breaking (folding) all scores, but do not lock any parts in place. Perforated areas fold in the opposite directions.

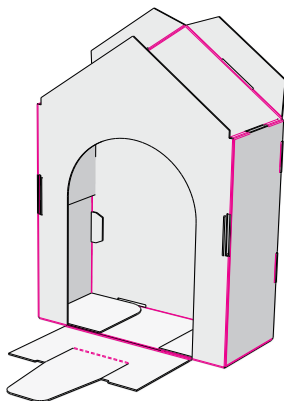
 **Step 2:** Fold up the back side first, followed by folding in the inside walls that are attached to the back side. Once this is done, fold up the front side of the doghouse.




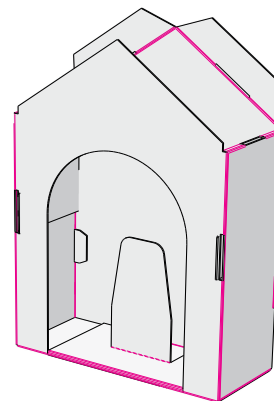
 **Step 3:** Fold the outside walls inward. The bottom flaps go under the inside wall. Tuck **Tab A**, and **Tab B** into correlating **Slots A** and **B**. Repeat for **Tab C** and **Tab D**.




 **Step 4:** Fold **Rollover A** and **Rollover B** into doghouse. When folded inward completely, **Rollover A** and **Rollover B** will lock into place.



 **Step 5:** Fold in **Rollover C** into bottom of box. Tabs will lock into place. The stand portion will need to be bent backwards in order to lock **Rollover C** into place. The stand portion will help to hold Buddy up in place while in his doghouse.



 **Step 6:** Fold inward the top flaps on the back panel of the doghouse. This will create **Slot F** and **Slot H**. Tuck in **Tab E** into **Slot E**, **Tab F** into **Slot F**, **Tab H** into **Slot H** and **Tab G** into **Slot G**. Tucking the tabs in that order will allow for easiest assembly.

